



**Culnat™**  
Specialty plumbing products

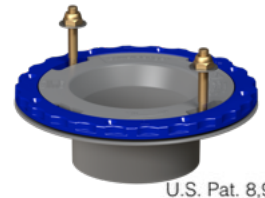
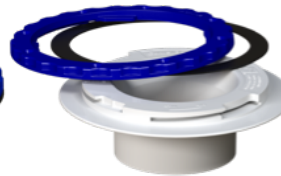
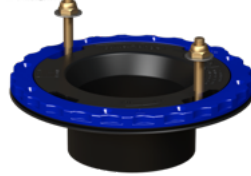
120 E. Bell Ave  
Rockdale, TX 76567  
info@culnat.com | culwellflange.com  
855.285.9355

MADE IN USA



**Culwell® Flange**  
No leaks, no repairs...no kidding!

**4 in. x 3 in. HUB  
GLUE-IN MODELS**



U.S. Pat. 8,955,172

**TECHNICAL SPECIFICATIONS:**

Culwell® Flange 4-in x 3-in Hub Glue-In models are for tile applications with impermeable floor-covering membranes from 30 to 100 mils thick or used without a membrane when the flange is recessed below the finished floor. The flange attaches to the sanitary piping system using conventional means that are standard in the industry.

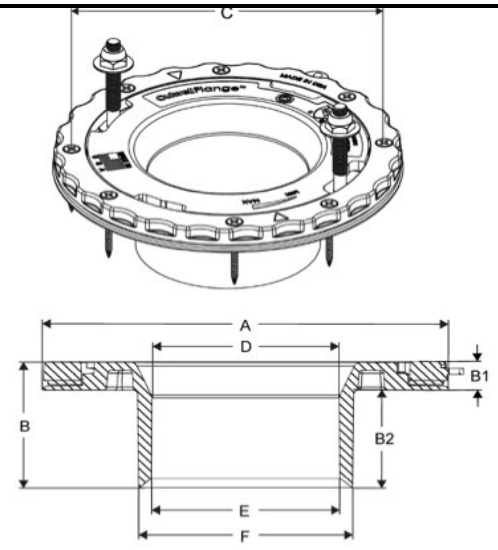
- Solvent weld inside 4 inch or over 3 inch Schedule 40 DWV pipe
- Flat surface design for added seal protection under the flange when used without a water barrier membrane or
- Use with an impermeable membrane liner to seal and protect the entire bathroom floor
- Prevents water leakage into the subfloor, protecting the property from damage

**Additional Features include:**

- Uniquely engineered flat sealing surface for maximum contact between the flange and floor.
- One-of-a-kind **nylon clamping ring** for superior strength and durability (withstands over 500 lb. per closet bolt), preventing the need for repair or replacement in the future, backed by Culnat's exclusive **LIMITED LIFETIME WARRANTY**.
- Clamping Ring that compresses an elastomeric sealing gasket against a floor-covering membrane liner to ensure a water-tight seal, while also engaging with the gasket to keep the closet bolts in place for ease of toilet installation.
- Eight countersunk holes for secure attachment of the flange to the floor.

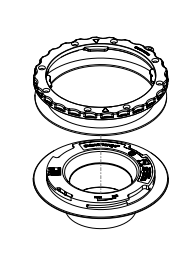
**Wet rooms/Small spaces  
Multi-floor  
Concrete  
Bariatric/Disability  
Commercial - Residential**




ALL DIMENSIONS ARE IN INCHES.		Model Nos.		
		A43	P43	PG43
<b>A</b>	Overall Diameter	7.56	7.56	7.56
<b>B</b>	Max. Overall Height*	2.53	2.53	2.53
<b>B1</b>	Flange Height Above Subfloor or Slab* (w/ 1 Sealing Gasket)	0.58	0.58	0.58
	Flange Height Above Subfloor or Slab* (w/ 2 Sealing Gaskets)	0.59	0.59	0.59
<b>B2</b>	Hub Depth	1.95	1.95	1.95
<b>C</b>	Screw Centers	6.76	6.76	6.76
<b>D</b>	Hub I.D. (Bottom Socket)	3.485 – 3.500	3.485 – 3.500	3.485 – 3.500
<b>E</b>	Hub I.D. (Socket Entrance)	3.511 – 3.525	3.515 – 3.529	3.515 – 3.529
<b>F</b>	Hub O.D. (Socket Entrance)	3.967	3.967	3.967



\*Max. Overall Height and Flange Height Above Subfloor or Slab dimensions do not include additional height attributed to the thickness of the selected floor-covering membrane. Flange height in relation to the finished floor will vary depending on the thickness of the membrane and tile used during installation.

**NOTE:** Dimensional data is subject to customary manufacturing tolerances.



Model No.	Item No.	Certifications	Description	UPC / GTIN	Ct.	Wt (lb.)
A43	758130		Culwell® Flange 4-in x 3-in Hub Glue-in Black ABS Plastic	861225000202	1	0.88
				10861225000209	6	7.527
P43	758132		Culwell® Flange 4-in x 3-in Hub Glue-in White PVC Plastic	861225000219	1	1.03
				10861225000216	6	8.397
PG43	N/A		Culwell® Flange 4-in x 3-in Hub Glue-in Light Grey PVC Plastic	861225000226	1	1.03
				861225000223	6	8.397

Individually packaged with 5/16-in closet bolts (Screws are not included)

**MATERIALS AND STANDARDS INFORMATION:**

- All models referenced above meet the requirements of a new standard IAPMO IGC 285 and NSF/ANSI 14, and are listed with IAPMO R&T, Inc. under File No. 8073 for compliance with the Uniform Plumbing Code and International Plumbing Code. In addition, Models A43 & PG43 meet the requirements of CSA B181.1 and CSA B181.2, respectively, and are also listed with IAPMO R&T, Inc. for compliance with the National Plumbing Code of Canada.
- PVC flange bodies comply with the requirements of ASTM D2665.
- ABS flange bodies comply with the requirements of ASTM D2661.
- Clamping rings are made of nylon that has a flexural modulus of at least 2,000 MPa (290,076 psi), as specified in the Basic Property Table (Table PA) of ASTM D4066.